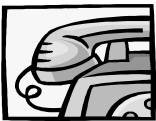




January 2012

# Heritage Happenings

Published Exclusively for the Residents of Heritage Place II Homeowners Assn.



## IMPORTANT NAMES AND NUMBERS

### MANAGEMENT COMPANY

House of Management Enterprises  
5756 S. Semoran Blvd.  
Orlando, FL 32822  
Mickey House  
www.houseofmgmt.com  
Office: 407-852-5300  
Fax: 407-852-5301

### BOARD MEETINGS

7pm, see bulletin board for location.  
January 19, 2012  
February 16, 2012

### BOARD OF DIRECTORS

President  
Carol Swanburg  
carol@heritageplace2.com  
Vice President  
Open Position  
vice\_president@heritageplace2.com  
Sec./Treas.  
Ken Celmer  
ken@heritageplace2.com  
Heritage Place II Website:  
www.heritageplace2.com  
Newsletter Editor E-mail:  
admin@heritageplace2.com

## COMMUNITY NEWS

### PROUD OF OUR TREE-LINED STREETS

Congratulations are due to all the residents that have helped their Streetscape trees grow over the past nine years! In December of 2002, Orange County/UFIFAS donated and supervised the planting of over 200 young oaks, cypress, and crepe myrtles between the curbs and sidewalks in front of many of our homes. When planted, these trees had an estimated retail value of \$20,000! Besides adding monetary value to our property, these maturing trees create a natural unifying appearance, generate valuable shade in landscapes (which reduces the amount of watering necessary), decrease erosion, clean the air, and provide habitat for wildlife.

A reminder to all residents with Streetscape trees: Never top (cut the lead branch) or overprune (lollipop/topiary) these trees. Light pruning of lower or dead limbs is all that is necessary. Please allow **these trees to otherwise grow naturally**, they are an asset to your property value.



### CRIME WATCH

Crimes in Heritage Place continue unabated with seven more of our neighbors reporting incidents. Three auto burglaries and four residential burglaries occurred from November 1st.

### ANNUAL MEETING FLOPS, AGAIN.

The Annual Homeowner's Meeting failed to attain a quorum (minimum representation of members) once again in 2011. The meeting was to be held on November 3rd but with less than 10% of homeowners in attendance (or represented by proxy), no meeting could be officially held. However, some notable changes did occur at the Board Meeting which followed. Terri Pope-Hellmund, our devoted president, has declined to run for another term. We all owe Terri our gratitude for her tireless efforts on behalf of residents. Her straightforward, compassionate, and structured approach was an asset to the community.

Continued on page 2

No nominations or volunteers were available that night, leaving a vacancy on the Board of Directors. The Board can run on contingency with two members but a third is urgently needed. Anyone interested should attend the next posted Board Meeting.

Carol Swanburg, our former VP, has volunteered to fill the position of president, while Ken Celmer will assume the responsibilities of secretary/treasurer. More information about the Board of Directors can be found at [www.heritageplace2.com](http://www.heritageplace2.com).



## DUES ARE DUE...

The deadline for payment without incurring late fees is Feb. 1. Please watch the mail for your statement and payment instructions. Contact House of Management, 407-852-5300, if you have any questions.

## COMMUNITY REMINDERS



- Please remove all holiday decorations from your home and yard by January 31<sup>st</sup>.
- No parking in the streets (overnight or for more than 10 hours).
- Do not park on the grass or block sidewalks.
- Trash bins must be stored out of sight from the street.

## GARDENING CHECKLIST

- *Deciduous fruit:* Now is the time to plant deciduous fruit trees. This will give roots time to develop before the warm and dry spring months.
- *Cold protection:* Frost or freezes are likely this month and next. Be ready to cover tender plants to minimize damage.
- *Irrigation:* Water lawns once weekly on your designated day.
- *Shrubs and Trees:* Prune non-spring flowering shrubs and trees this month to improve form.
- *Crepe Myrtle:* While crepe myrtles do not require pruning, removing seed pods, crossing branches and small twiggy growth improves the appearance and form of the plant.
- *Pests:* To control scale on citrus, shrubs, camellias, and deciduous fruit trees, apply horticultural oil while plants are dormant.



## WINTER LAWN CARE

Grassy weeds such as crabgrass or Bermuda grass will often brown out more quickly than your warm season grass. This is an ideal time to gently rake small weedy areas out. For larger areas, you may want to wait until the spring to renovate these sections. Your turf and other plant material will need much less water with the shorter days and lower temperatures. Too much water encourages a number of problems, including weeds and diseases. Water will not make dormant lawn turf green

again.

Mow at the correct height, no shorter than 3", and keep the mower blade sharp to reduce damage and disease exposure. Add a fuel stabilizer to your gas can to prevent fuel degradation and stir or swirl the container before adding the fuel to your mower.

## CAR TALK

Accessories you have plugged into your car can drain your car battery. Ironic. So unplug the phone charger, ipod or tablet that may be sucking the life out of your ride's battery.



An air filter protects the engine from dirt and debris. And you can see an 11% improvement in acceleration after replacing a dirty air filter with a new one.

Tires air pressure can decrease significantly in colder temps. Inflation levels are measured in PSI (pounds per square inch). They can lose 10 psi a month just through everyday driving and can potentially lose 1 psi for every 10 degrees Fahrenheit temperature drop. By maintaining the correct tire air pressure, you can realize a 10 percent improvement in gas savings.

The "W" in your oil type stands for "Winter." And the number before the "W" (i.e. 5W30) lets you know how easily this oil will pump at low temperatures. 0W is for very low temperatures, while higher numbers like 10W are designed for milder winter weather.

## INTERESTING NEW YEAR FACTS

- New Year is the oldest of all holidays, as it was first observed in ancient Babylon as many as 4000 years ago.
- Celebrating New Year on January 1 is purely arbitrary, as neither it has agricultural significance nor astronomical. Many countries still celebrate it in spring, the season of rebirth of new crops.
- The Roman senate declared January 1 as the New Year in 153 BC. Though even this date saw major tampering, it was Julius Caesar who again declared January 1 in Julian calendar as the New Year, in 46 BC.
- New Years is still observed as the Feast of Christ's Circumcision by some denominations.
- The first month of the year i.e. January has been named after God Janus (Latin word for door), in the Roman calendar. Janus is the God with two faces, one looking backwards and one forward, at the same time and marks the 'spirit of the opening'
- The Romans began a tradition of exchanging gifts on New Year's Eve, by giving one another branches from sacred trees, for good fortune. The gift phenomenon is prevalent from those times, till date.
- January 1 was revived as New Year in 1582, by the Gregorian calendar and so celebrated by most of the countries till date.
- New Year is celebrated like a festival throughout the world and everyone around is in festive mood, partying, singing and dancing to ring out the old year and ring in the

new.

- In Britain, when the Big Ben clocks strikes 12, everyone gathers around to sing 'Auld Lang Syne', a Scottish song. It was written by Robert Burns in the 1700's, literally meaning "old long ago," or simply, "the good old days", to remember old and new friends.
- It was once believed that the first visitor on New Year's Day would bring either good luck or bad luck for the rest of the year, depending on who he/she was.
- Many cultures believe that anything given or taken on New Year, in the shape of a ring is good luck, because it symbolizes "coming full circle".
- Many parts of the U.S. celebrate New Year by consuming black-eyed peas and other legumes, as it has been considered good luck in many cultures.
- The tradition of making New Year resolution dates back to the early Babylonians.
- Traditionally, it was thought that people could alter the luck they would have throughout the coming year by what they did or ate on the first day of the year. It has, therefore, become important to celebrate first day of the New Year in the company of family and friends.
- The Spanish ritual on New Year's eve is to eat twelve grapes at midnight. The tradition is meant to secure twelve happy months in the coming year.
- Noisemaking and fireworks on New Year's Eve is believed to have originated in ancient times, when noise and fire were thought to dispel evil spirits and bring good luck.

## ANXIETY, STRESS AND YOUR HEALTH

By Rachel Morgan  
[www.livestrong.com](http://www.livestrong.com)

There's no doubt that stress is part of life. In fact, some stress, called eustress, is beneficial. Stress and anxiety become a problem when they are continual and affect how you function in your daily life. This is a common phenomenon in the U.S.; more than 18 percent of the adult population develops an anxiety disorder each year, according to the National Institute of Mental Health. Anxiety and stress can be detrimental to both your psychological and physical health if left unmanaged.



### UNDERSTANDING STRESS AND ANXIETY

Stress is simply a response to a physical or emotional demand put upon you. Your body reacts even to positive situations; you may notice your heart rate speeds up during a happy event, for example. Anxiety differs in that it involves feelings of nervousness or fear. Anxiety is normal in certain situations, but it can become problematic when you experience it for long durations or without cause. You may develop conditions such as panic disorder or generalized anxiety disorder as a result.

Stress and anxiety can manifest in

*Continued on page 4*

many physical symptoms that vary from person to person. Common responses include dizziness, headache, tense muscles, upset stomach, trembling and sweating. While these may not seem serious, prolonged stress and anxiety can have major effects on your health. Being continually under stress increases your chances of getting sick or developing heart disease. It can be a contributing factor in high blood pressure, irregular heartbeat and sleep difficulty.

## PSYCHOLOGICAL HEALTH EFFECTS

Stress and anxiety can have considerable effects on your psychological health as well. You may be overwhelmed with feelings of insecurity, worry, anger or sadness. Being stressed can alter your effectiveness in your roles and responsibilities. Having outbursts, increased arguments and isolating yourself are not uncommon. Anxiety can be both a contributing factor and a symptom of several mental health conditions, including depression, a serious illness that affects not only you, but how you deal with other people and life situations. It can have considerable effects on both your mental and physical well-being.

## REDUCING STRESS AND ANXIETY

Being open about your feelings is key in managing stress and anxiety. Keeping upsetting thoughts and emotions private can affect your health as well as lead to outbursts that cause further complications. Find ways to balance your responsibilities with activities you enjoy. Your life should not be completely focused on your job or raising your kids. Make time for your personal interests and hobbies. Ex-

ercise is also an effective method of reducing stress and anxiety. Consider taking a yoga or tai chi class to strengthen your body and relax.

Read more: <http://www.livestrong.com/article/338597-anxiety-stress-and-your-health/>  
#ixzz1b672QaQ9

## Classic Movie Trivia

Answers are at the bottom of the page.

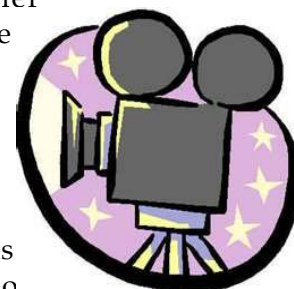
1. What was the heroine's name in 'Gone With the Wind'?
2. Who was the female lead in The Philidelphia Story?
3. Who was the famous singer in 'Come September'?
4. Who starred with Doris Day in 'Pillow Talk'?
5. What is the name of the Wilkes' plantation in Gone With the Wind?
6. Though they never married, who did Spencer Tracy spend his final years with?
7. Gregory Peck and Audrey Hepburn starred in \_\_\_\_\_ Holiday.
8. "Carve Her Name With Passion" is about which person?
9. Who directed La Dolce Vita?
10. Who makes a cameo appearance in To Catch a Thief?
11. The movie, 'Mogambo' with Clark Gable was a remake of which movie?
12. Who was the unofficial leader of The Rat Pack?

- CLASSIC MOVIE TRIVIA ANSWERS**
1. Scarlett O'Hara
  2. Katherine Hepburn
  3. Bobby Darin
  4. Rock Hudson
  5. Twelve Oaks
  6. Katherine Hepburn
  7. Roman
  8. Violet Szabo
  9. Fellini
  10. The Sweet Life
  11. Alfred Hitchcock
  12. Red Dust
  13. Frank Sinatra

## MOVIE & TV TRIVIA

Answers are at the bottom of the page.

1. What song did the cast of the Mary Tyler Moore Show sing at the end of the series finale in 1977?
2. What was the national origin of the character Meathead in the series All in the Family?
3. What were the names of Alex P Keaton's sisters in the series Family Ties?
4. On Little House in the Prairie, what is the name of Laura's horse?
5. Which cast member of Six Feet Under was born in Australia?
6. What surf band performed the theme music for Hawaii 5-0?
7. Which officer on Hill Street Blues was known as a "Biter"?
8. Molly Ringwald appeared in which television series in 1979-1980?
9. What is the name of the news magazine show that Murphy Brown works on?
10. Which Desperate Housewives star lost the part of Grace in Will & Grace to Debra Messing in 1988?



- MOVIE & TV TRIVIA ANSWERS**
1. It's a Long Way to Tipperary
  2. Polish
  3. Mallory and Jennifer
  4. Bunny
  5. Rachel Griffiths
  6. The Ventures
  7. Mick Belker
  8. The Facts of Life
  9. FYI
  10. Nichollette Sheridan

# Neighborhood Watch

*Heritage Place II Property Owner's Association*

In an effort to keep our community a safe place to live, we need to “watch” out for one another. The Neighborhood Watch Committee needs to update the records of residents living in our community to include emergency contact information. To learn more about the Watch, visit the “Committee” section of [www.HeritagePlace2.com](http://www.HeritagePlace2.com). Please fill out the information below and bring to a Board meeting as posted or fax to Mickey House, House of Management Enterprises, 407-852-5301.

Home Address: \_\_\_\_\_

Your Name: \_\_\_\_\_ Cell Phone: \_\_\_\_\_

Work Phone: \_\_\_\_\_ Home Phone: \_\_\_\_\_

E-mail Address: \_\_\_\_\_

Adult Residents: \_\_\_\_\_

Children: \_\_\_\_\_ age \_\_\_\_\_ \_\_\_\_\_ age \_\_\_\_\_

\_\_\_\_\_ age \_\_\_\_\_ \_\_\_\_\_ age \_\_\_\_\_

\_\_\_\_\_ age \_\_\_\_\_ \_\_\_\_\_ age \_\_\_\_\_

Other residents/ pets: \_\_\_\_\_

*We respect your privacy. Your information will not be shared with any third parties and will be used strictly for the Neighborhood Watch and/or Heritage Place II related correspondence.*

*Please check each of the categories in which you would be interested in participating:*

\_\_\_\_\_ Neighborhood Watch Block Captain

\_\_\_\_\_ Newsletter/Website Committee

\_\_\_\_\_ Architectural Review Committee

\_\_\_\_\_ Landscape Improvement

\_\_\_\_\_ Home Improvement

\_\_\_\_\_ New Resident Welcome Committee

\_\_\_\_\_ Block Parties

\_\_\_\_\_ Garage Sales

\_\_\_\_\_ Home of the Month

\_\_\_\_\_ Other: \_\_\_\_\_

Other comments: \_\_\_\_\_

\_\_\_\_\_

**Heritage Place II Property Owner's Association | Fax form to: 407-852-5301**

---

# BYLAW REMINDERS

---

For your convenience, here is a summary of the community's general restrictions. A complete copy of the covenants is viewable anytime at [www.HeritagePlace2.com](http://www.HeritagePlace2.com), click on "Comm. Documents", then "Bylaws".

**ARC Approval** Is required in writing before any addition or change is made to the lot or exterior of the dwelling unit. An ARC application is available on the website or on the last page of this newsletter.

**Residential use only.** Prohibits commercial use of any portion of a lot or dwelling unit.

**No temporary structures.** Including but not limited to trailers, mobile homes, tents, shacks, sheds, boats, or barns - unless approved by the ARC.

**Garages** No garage shall be enclosed permanently or converted to another use. Carports are not permitted.

**Parking restrictions** No vehicles may be parked on grass. No vehicles are permitted which extend beyond the length of the driveway. No commercial, recreational, or inoperable vehicles (unless kept in garage). No parking on the streets overnight or in excess of 10 hours.

**Animals** No livestock. No animals of any kind may be kept or raised for commercial purposes. Common domesticated pets shall not be allowed off lot unless on a leash. No pet shall be allowed to make noise in a manner or volume that disturbs other Owners.

**Signs** No flags or signs are permitted on any lot, including but not limited to commercial and political signs, except common real estate signs which shall not be illuminated or exceed four square feet.

**Activity Restrictions** No noxious or offensive activity. No condition will be permitted to exist on a lot that may become an annoyance or nuisance.

**Fixed Game Structures** No basketball goals or any game or play structures are permitted in the front of the dwelling lot, or to be visible from the street. Tree houses are prohibited.

**Fence Restrictions** No fences may be in excess of 6 feet height and must be approved by the ARC. Lots which adjoin a lake or pond may not construct a fence greater than 4 feet in height and such fence must have at least 50% visibility through it.

**Swimming Pools and Screening** All plans must be approved by the ARC prior to construction.

**Window Air Conditioners** Window mounted air conditioner units are prohibited.

**Allowable Trim** No exterior shutters, awnings, or decorative trim shall be installed without ARC approval.

**Window Coverings** No reflective foil, tinted glass, sheets, newspapers or other materials shall be permitted on windows except for tinted bronze glass and installation of such must be approved by the ARC.

**Antenna Restrictions** One satellite dish, not greater than 18" diameter is permitted to be visible from the street in front of the lot. No other antenna, discs, masts or towers may exist unless approved by the ARC.

**Clotheslines** No clotheslines may be visible from the street in front of any lot.

**Exterior Paint** All colors shall be subject to the approval of the ARC. For approved color schemes, please request to view the Heritage Place II Color Book from one of the ARC members. Their contact information can be found at [www.heritageplace2.com](http://www.heritageplace2.com).

**Garbage** All waste must be placed in sanitary containers (of 50 gallons or less, with lids and handles) and, except on scheduled pick-up days, such containers shall be kept at the rear of dwelling unit or out of sight from the street. Recycling is mandatory in Orange County, free containers may be obtained by calling 407-836-6601.

**Tree Removal** Any tree with a trunk diameter of 4" or more... may not be removed without prior ARC approval. Violators shall be required to replace such trees of like size, kind, and condition within 30 days at their expense.



# LOCAL DIRECTORY

## IMPORTANT PHONE NUMBERS FOR RESIDENTS TO KEEP HANDY.

Our Management Company, H.O.M.E.....407-852-5300  
(For questions about bylaw violations, association fees, meetings, etc.)

Our Website.....www.heritageplace2.com

Orange County Sheriff's Office  
Emergency.....911  
Non-Emergency.....407-836-4357

Sector 4 Substation.....407-836-3770

Crimeline.....407-423-TIPS (8477)

Homeland Security.....407-254-7100

Orange County Services.....311  
Call 3-1-1 for information about all county government agencies including code enforcement, animal services, zoning, courts, waste collection, and more.

Orange County Fire Rescue.....407-737-2444

Florida Highway Patrol (Orange Co.).....407-737-2200

Orange County Public Schools.....407-317-3463  
John Young Elementary.....407-858-4610  
Hunter's Creek Middle.....407-858-4620  
Freedom High.....407-251-2500  
Crossing Guards.....407-254-7115

Orange County Utilities  
Customer Service.....407-836-5515  
Report Water Emergency .....407-836-2777

Progress Energy  
Customer Service.....407-629-1010  
Report Streetlight Outage.....800-700-8744  
Report Power Outage.....800-228-8485  
Digging? Call first!.....800-432-4770

FEMA.....800-621-FEMA (3362)

Fish & Wildlife Commission.....407-275-4150

Bright House Networks.....407-291-2500

Expressway Authority/ EPass.....407-823-7277

Traffic Info Hotline.....511

Lynx Bus Information.....407-841-2279

Post Office – Wetherbee Location.....407-855-6568

### DOG WASTE



ORDINANCE #95-32  
FINE \$500  
To report any animal violation, call:

**407-836-3111**

## Trash Pick Up Schedule

**Tuesdays  
Garbage**

**Wednesdays  
Yard Waste**

**Fridays  
Bulk Waste, Garbage and  
Recycling**

Please remember that your trash can only be in front of your home on those days. You must bring your trash bins inside after the trash is collected.

**Disclaimer:** The Heritage Place II Community Newsletter is published for the Heritage Place II Homeowners Association by Focus Community Publications & Printing, Inc. as a courtesy to all property owners and residents. Focus nor the Association assume any responsibility for article content or advertising message as submitted for inclusion in the newsletter. Advertising and articles are not endorsed by the Association, nor is there any implied warranty by the Association or its staff.

**Statement of Business Support:** When patronizing any of the businesses advertising in our newsletter, whether or not for the first time, it is helpful if you tell them you saw their ad in your community newsletter. The Heritage Place II Community Newsletter is published by Focus Community Publications and Printing, Inc. of Saint Cloud at no charge to our association. Costs of development and printing are underwritten through the sale of advertising. These advertisers pay for their ads to reach you and they have no other way of knowing if their ad attracts your attention or business unless you mention that you heard about them through the Heritage Place II Community Newsletter.

**FOCUS**

COMMUNITY PUBLICATION &  
PRINTING, INC.

2009 JAFFA DRIVE UNIT H  
ST. CLOUD, FL 34771

PHONE: 407-892-0019

FAX: 407-957-0057

© 2011 Focus Community Publications

**HERITAGE PLACE II PROPERTY OWNERS ASSOCIATION, INC.  
GENERAL APPLICATION TO THE ARCHITECTURAL REVIEW COMMITTEE**

All exterior alterations, modifications, additions and/or improvements must be approved by the Architectural Review Committee (ARC). See Article V & VI of the Heritage Place II Declaration of Covenants for details. **This application is to be completed by the legal homeowner and submitted to the ARC before any work commences. Please include as much detail as possible to expedite processing. If applicable, also include floor plans, landscape plans, site plans, material samples and color plans.**

**TO BE COMPLETED BY HOMEOWNER:**

<b>NAME:</b>	<b>DATE:</b>
<b>PROPERTY ADDRESS:</b>	
<b>PHONE Home:</b>	<b>Cell:</b>
<b>DESCRIPTION:</b> <i>(i.e. fence installation, repaint house, pool, screen enclosure, solar panels, window film, landscaping, etc.)</i>	
<b>LOCATION:</b> <i>Attach a survey or lot plan detailing the location of proposed addition/modification.</i>	
<b>SPECIFICATIONS:</b> <i>Attach copies of plans, estimates, color chips, samples, or pictures.</i>	
<b>Dimensions</b>	
<b>Materials</b>	
<b>Colors</b>	
<small>I hereby confirm that any ensuing work (pending approval) will be consistent with the plans submitted herein and acknowledge that I must submit another application if I wish to make a change. I consent to entry by the ARC onto the above referenced property for the purpose of review and ensuring compliance.</small>	
<b>OWNER'S SIGNATURE</b>	

*Please note:* All requests must conform to local Zoning & Building Regulations. You are responsible for obtaining all necessary permits once your request is approved. The ARC reserves the right to deny any changes if they determine that it is not consistent with the original development plan of the community, the guidelines, and/or the covenants. Application review may take up to 30 days. Signs are not permitted to be displayed on the property by vendors performing work or services. Construction materials may not be stored on a lot for more than 30 days without commencing construction. Please review Article VI of the Declaration of Covenants before submitting your application, if you do not have a copy, visit [www.heritageplace2.com](http://www.heritageplace2.com) and click on Comm. Documents, then Bylaws.

**Application Questions?** Contact the property manager, Mickey House at 407-852-5300  
**MAIL COMPLETED APPLICATION TO:** House of Management Enterprises (fax: 407-852-5301)  
 5756 S. Semoran Blvd. Orlando, FL 32822

**TO BE COMPLETED BY THE Architectural Review Committee:**

<b>DATE REVIEWED:</b>		<input type="checkbox"/> APPROVED <input type="checkbox"/> DENIED <input type="checkbox"/> CONDITIONAL <small>see comments</small>
<b>SITE REVIEWED:</b>	<input type="checkbox"/> YES <input type="checkbox"/> NO	<b>BY WHOM:</b>
<b>COMMENTS:</b>		
<small>Must be reviewed and signed by a minimum of two ARC members:</small>		
<b>ARC SIGNATURE 1:</b>		
<b>ARC SIGNATURE 2:</b>		<i>Opt. ARC SIGNATURE 3:</i>

"By signing, we verify that the submitted plans are consistent with the covenants, guidelines, and general appearance of the Heritage Place II community."  
 DISCLAIMER: "These plans have been reviewed for the limited purpose of determining the aesthetic compatibility of the design plans with Heritage Place II generally, in the opinion of the undersigned, these plans are reviewed on that limited basis. No review has been made with respect to functionality, safety, governmental regulation compliance, or otherwise and no reliance on this approval should be made by any party with respect to any such matters. The above-signed expressly disclaims liability of any kind with respect to these plans, the review hereof, or any structures built pursuant hereto, including but not limited to liability for negligence of breach of express or implied warranty."